



CZECH REPUBLIC

CAPITAL: PRAHA – PRAGUE
 POPULATION: 10 649 800
 GEOGRAPHICALLY: centre of Europe
 AREA: 78 866 km²
 BORDERS: Germany, Poland, Austria, Slovakia
 CURRENCY: Czech koruna (CZK)
 GDP: 215 bil. \$ (2018)

The School of Business Administration is located in the town of Karviná, in the north-eastern part of the country called the Moravian-Silesian Region which is mostly mountainous and industrial. Karviná is known for its coal mines as well for Spá Darkov where the patients with problems with locomotion, neurological dysfunction after an injury or post-surgery are being treated. The town offers suitable conditions for leisure and sports activities, especially hiking and biking with a rich network of cycle paths.



Silesian University in Opava
 School of Business
 Administration in Karvina



Univerzitni nam. 1934/3,
 733 40 Karvina
 Czechia, European Union

Phone: +420 596 398 221
 E-mail: international@opf.slu.cz

www.slu.cz/opf/en



EUROPEAN UNION
 European Structural and Investment Fund
 Operational Programme Research,
 Development and Education



MINISTRY OF EDUCATION,
 YOUTH AND SPORTS



COME TO STUDY OR TO TEACH

Czechia

Karvina



SILESIA
 UNIVERSITY
 SCHOOL OF BUSINESS
 ADMINISTRATION IN KARVINA

THE FACULTY

The Faculty is oriented towards the education of experts in the **economic, financial, social, administrative** fields of study as well as **computer studies**.



The Faculty offers to the students three-step educational system taught in Czech language: Bachelor's (Bc. degree), Master's (Ing. degree), Doctoral (Ph.D. degree).

Study program taught in English

MASTER IN BUSINESS ECONOMICS AND MANAGEMENT

After all, today's students are tomorrow's professionals. Come to join us in new and modern study programme where cutting-edge research meets with family atmosphere of regional university.

QUICK FACTS

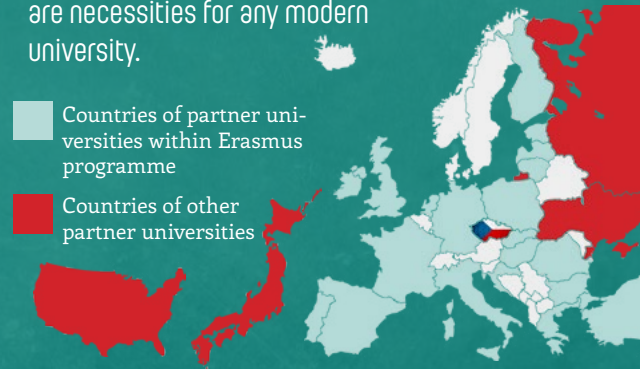
Duration:	2 years / full-time
Tuition fee:	2.500 EUR/ academic year
Online application:	April
Online entrance exam:	January - May
Admission decision:	May
Enrolment:	September
Start:	September

www.masterinbusiness.cz

INTERNATIONALISATION



We believe that intensive international cooperation and excellent contacts with international partners are necessities for any modern university.



WE ARE THE ERASMUS FAMILY MEMBERS

International students or teachers are welcome to study or teach at the SBA within the Erasmus Plus program or bilateral agreements on cooperation between universities and choose spectrum of courses taught in English on Bachelor's and Master's level.

ERASMUS STUDENT CLUB

For foreign student there is an "Erasmus Student Club" that is specialized on support and help for foreign students in their adaptation in new background. The club mainly organizes leisure activities such as trips, sports and cultural events.

ACADEMIC CALENDAR

	Winter Semester	Summer Semester
Deadline for apl.	June 20	October 20
Orientation week	3dr week of September	3rd week of February
Study period	September - December	February - May
Examination period	January - February	May - June

ACCOMMODATION

Overall capacity is 444 students. 2 buildings reconstructed in 2008. Directly connected to university library. Free access to fitness centre



The students are accommodated in double rooms. Each two rooms share bathroom and toilet. The Internet plug is available in every room. The rooms are fully equipped with furniture, pillow and blanket. The common kitchen is equipped with dishes, fridge, microwave oven and cooker. There is an access to university library, fitness centre, school canteen and laundry. The reception is open 24/7.



UNIVERSITY LIBRARY

Books are computerised for easy access. Some material can be accessed through an inter-library loan system.

Facilities for students: reading room, multimedia computer classroom and card copy machine with scan.



The library provides a professional library database, which is presented on the Internet. The library also organizes cultural and educational activities.

