

SILESIA UNIVERSITY IN OPAVA



**SILESIA
UNIVERSITY
IN OPAVA**

ABOUT THE UNIVERSITY

Key figures

- 🏛️ Established in 1991
- ☰ 5 faculties/institutes
- 👥 5000+ students
- 👤 300 academics
- 📖 3 levels of studies
- 📍 2 university towns
- ★ 1 European university

The Silesian University in Opava is a public higher educational institution established in 1991. It was founded shortly after the fall of the communist regime in former Czechoslovakia with the aim of spreading liberal university education to regions. The University with more than 5,000 students offers study opportunities in approximately 80 accredited degree study programmes at bachelor's, master's and doctoral level. The University also provides education in lifelong learning courses.

The Silesian University in Opava, with a team of almost 300 academic and scientific staff, conducts teaching and research in a wide portfolio of fields such as economics, business and management, finance, social studies, humanities, history, languages, health sciences, physics, mathematics, computer sciences, multimedia, and art. The diversity of disciplines is structured into five constituencies of the University – three faculties and two institutes.

Faculties and Institutes

- ☰ Faculty of Philosophy and Science
- ☰ School of Business Administration
- ☰ Faculty of Public Policies
- ☰ Mathematical Institute
- ☰ Institute of Physics

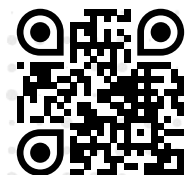




The Silesian University in Opava is a legitimate member of the European University Association and other international organisations. The University is a holder of the HR Excellence in Research Award and therefore meets European standards in employee care and openness and transparency in selection procedures.

Internationalisation is one of the University's strategic priorities and we are dedicated to building mutually beneficial collaborations with our current and future international partners. The Silesian University in Opava is a proud member of the STARS EU alliance comprising nine universities, which was awarded the prestigious status of European University in 2023. Moreover, the University has established and continues to maintain cooperation with more than 130 foreign partners from 45 countries in Europe, Asia, and America. Through various exchange programmes, joint educational activities, development and scientific projects, we are committed to offering numerous opportunities for students and faculty members to gain an interesting and enriching international experience.

slu.cz/slu/en/



OPAVA

Opava is a mid-sized town with a population of approximately 56,000 inhabitants. Historically, it has been one of the centres of Silesia and was first documented in the 12th century. Later, it became the capital of the then-named Austrian Silesia, one of the provinces of the Habsburg Monarchy. Opava's medieval roots are evident in its well-preserved Old Town. The Opava Town Hall with its 60 metres high Hláška tower offers an impression of the historical centre. The Co-Cathedral of the Assumption of the Virgin Mary and the Church of the Holy Spirit stand as iconic symbols of the town's heritage.

The Silesian Museum, a cultural gem and the oldest museum in Czechia, invites visitors to delve into the region's past through diverse exhibits and collections. Nature lovers can explore the scenic banks of the Opava River, adding a touch of tranquillity to the allure of the city. The Silesian Theatre, a cultural hub, hosts various performances, adding a touch of artistic flair to the town's atmosphere.

Opava is not just a historical and cultural centre. It offers many possibilities for those who love sports. Many facilities for football, hockey, tennis, volleyball, rollerblading, or indoor swimming are available.



Two university towns

The Silesian University is located in the northeastern part of Czechia called the Moravian-Silesian region. The University is based in Opava and Karviná, two towns in the Czech part of the historical land of Silesia.

KARVINÁ

Karviná is a town with 53,000 inhabitants located almost on the border with Poland and 20 kilometres from the third largest city in Czechia, Ostrava. Karviná has a rich mining history dating back to the second half of the 18th century, when hard coal deposits were discovered in the area.

Karviná has a beautiful historic centre with a renovated square, where the empire Fryštát Chateau is located. The Chateau is surrounded by a 36-hectares large English-style park, which is a popular place to relax. Visitors should definitely not miss the Karviná "Pisa", the slanted church of St. Peter of Alcantara. As a result of hard coal mining, the church collapsed by 37 metres, causing a 6.8-degree deviation of the church to the south.

The recreational facilities of the town include the Loděnice complex in the chateau park, a modern summer swimming pool, an outdoor sports centre and a golf course in Lipiny. Those interested can also choose from many indoor sports options. It features a water sports centre, ice rink and a multipurpose hall with tennis, badminton and squash courts and a fitness centre.





FACULTY OF PHILOSOPHY AND SCIENCE IN OPAVA

Top picks

From science to arts!

We offer a wide range of professionally and academically oriented study programmes and implements studies in all types of study from bachelor's to doctoral.

International experience

Students and academics have the opportunity to enrich their learning and research experiences through more than 55 partner universities all over Europe.

Accommodation

Students can be accommodated in dormitories in the Faculty premises, which are located right in the centre of Opava.

Premises

Modern teaching facilities, specialised laboratories, an art studio, a theatre hall and a large cinema hall. Visitor centres for the presentation and popularisation of Faculty activities.

 1,400 students


 90 academics

 Institutes

- Archeology
- Computer Sciences
- Creative Photography
- Czech Language and Library Science
- Historical Sciences
- Foreign Languages
- Movie and Television

Contacts

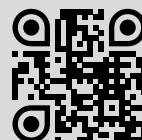
Silesian University
Faculty of Philosophy and Science
in Opava

 Masarykova třída 343/37,
746 01 Opava, Czechia

 international@fpf.slu.cz

 +420 553 684 255

slu.cz/fpf/en/



SCHOOL OF BUSINESS ADMINISTRATION IN KARVINÁ

 **2,300 students**

 **80 academics**

 **Departments**

• Economics and Public Administration • Business Economics and Management • Finance and Accounting • Informatics and Mathematics • Tourism and Leisure Activities



Top picks

Economics and Management

Bachelor's, master's and doctoral degree programmes fully taught in English.

study-economics.slu.cz

Business Gate

Exceptional link between students and real companies via authentic business projects.

businessgate.cz/en

International cooperation

70+ partner institutions around the globe. We are eager to initiate further collaboration in research and education.

Infrastructure

Modern spaces where education, innovation and creativity thrive in every corner.

Contacts

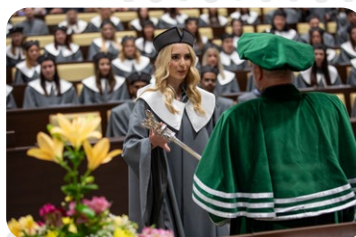
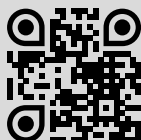
Silesian University
School of Business Administration
in Karviná

 Univerzitní nám. 1934/3,
733 40 Karviná, Czechia

 international@opf.slu.cz

 +420 596 398 221

slu.cz/opf/en/



FACULTY OF PUBLIC POLICIES IN OPAVA



 **1,200 students**

 **45 academics**

 **Institutes**

- Paramedical Health Studies,
- Pedagogical and Psychological Sciences ● Special Pedagogy
- Public Administration and Social Policy

Top picks

Study programmes with a high share of practical experience

Education mainly in professional degree programmes in areas of so-called helping professions such as nursing, midwifery, dental hygiene, social pathology and prevention or special education and wide areas of public administration.

Specialised labs

Modern specialised well-equipped classrooms are a unique part of innovative education, which leads to high quality employment of our graduates in the labour market.

International scientific periodicals

We publish three international scientific periodicals: Central European Papers, Social Pathology and Prevention and Nursing Perspectives.


Priorities

Our priority is to link theoretical science with practice and international experience in all kinds of activities.




Contacts

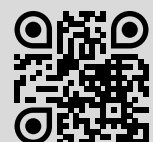
Silesian University
Faculty of Public Policies in Opava

 Bezručovo náměstí 885/14,
746 01 Opava, Czechia

 international@fvp.slu.cz

 +420 553 684 142

slu.cz/fvp/en/



MATHEMATICAL INSTITUTE IN OPAVA



 150 students

 23 academics

 Departments

- Geometry and Mathematical Physics
- Functional Analysis and Differential Equations
- Real Analysis and Dynamical Systems
- Applied Mathematics

Top picks

Study programmes

Bachelor's and Master's: applied and theoretical study fields. Doctoral: Geometry and global analysis, Mathematical analysis.

Cooperation with the private sector

Practice during studies. Bachelor theses in private companies.

Scientific activities

Conferences, workshops, seminars, high-quality research, impact publications

go.slu.cz/mathconf

Infrastructure

Attractive spaces for studying and teaching. Places where you can enjoy fun.

Contacts

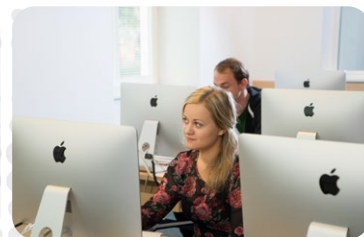
Silesian University
Mathematical Institute in Opava

 Na Rybníčku 626/1,
746 01 Opava, Czechia

 international@math.slu.cz

 +420 553 684 661

slu.cz/math/en/



INSTITUTE OF PHYSICS IN OPAVA



120 students



30 academics and 10 international researchers



Educational centres

- Theoretical Physics and Astrophysics
- General Physics and Applied Physics

Research centres

- Theoretical Physics and Astrophysics
- Computational Physics and Data Processing



Top picks

Study programmes

Bachelor's and Master's: Physics, Applied Physics, Popularization and Immersive Media, Theoretical Physics, High Energy Astrophysics. Doctoral: Theoretical Physics and Astrophysics.

Stimulating environment

Friendly and open-minded staff, personal attitude, assistance to foreigners.

Infrastructure

Planetarium-Unisphere, Observatory and 18-inch Telescope, High-performance computing clusters, Labs.

Scientific activities

High-quality research, impact publications, RAGtime conferences, cooperation with world's top universities and researchers.

Contacts

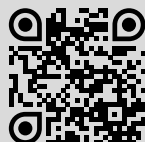
Silesian University
Institute of Physics in Opava

📍 Bezručovo nám. 1150/13,
746 01 Opava, Czechia

✉ international@physics.slu.cz

☎ +420 553 684 267

slu.cz/phys/en/



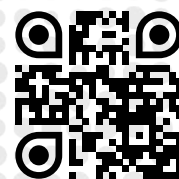
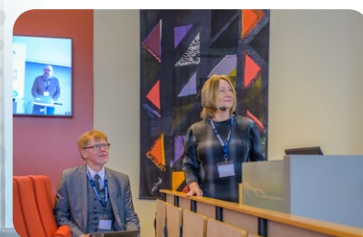
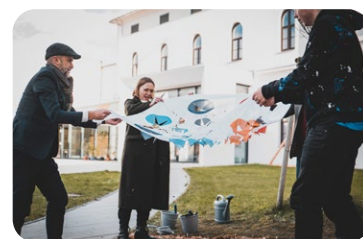
STARS EU ALLIANCE



STARS EU Strategic alliance for regional transition

The **ST**rategic **A**lliance for **R**egional **TranS**ition (STARS EU) is an alliance of nine European universities dedicated to preparing future generations for the digitalisation and automatisisation of society. The alliance focusses on interregional collaboration and exchange of ideas, people, and innovation within both educational and research fields. In the 2023 Erasmus+ European Universities Call, the STARS EU proposal won €12.4 mil. grant and gained the prestigious status of the European University.

The STARS EU alliance is coordinated by the Hanze University of Applied Sciences (The Netherlands) and the members are the University of La Laguna (Spain), the Polytechnic Institute of Bragança (Portugal), the Bremen University of Applied Sciences (Germany), the Silesian University in Opava (Czechia), the University West (Sweden), the Cracow University of Technology (Poland), the University of Franche-Comté (France), and Aleksandër Moisiu University of Durrës (Albania).



starseu.org

slu.cz/slu/en/

Contacts

Silesian University in Opava

Office for Science and International
Relations

📍 Na Rybníčku 626/1,
746 01 Opava, Czechia

✉️ international@slu.cz

☎️ +420 553 684 652
+420 553 684 654

