



Erasmus+



Information Brochure

for incoming Erasmus+ students



EVROPSKÁ UNIE
Evropské strukturální a investiční fondy
Operační program Výzkum, vývoj a vzdělávání



SILESIAN
UNIVERSITY
FACULTY OF PHILOSOPHY
AND SCIENCE IN OPAVA



Contact Details of FPS SU Erasmus+ Coordinator

Mgr. Kateřina Knopová

Erasmus+ Faculty Coordinator

Faculty of Philosophy and Science in Opava

Department of Science and Foreign Relations

Masarykova třída 343/37

746 01 Opava

Czech Republic

Phone: +420 553 684 255

E-mail: katerina.knopova@fpf.slu.cz



Before Mobility

Application Deadline

When your nomination (sent by your faculty) has been accepted, our faculty coordinator will send you a letter of acceptance. On receiving the letter of acceptance, the first step is to make an online registration in our system ISOIS. Please read the emails very carefully as most of the communication before mobility is done via email. The deadline for applicants is on 22nd of June for the winter semester and 22nd of October for the summer semester of each year. The Erasmus Identification Code of the Silesian University in Opava (for the registration form) is **CZ OPAVA01**.

Courses

You will find all the information about offered courses in an email sent by our faculty coordinator. You can choose to study any course taught at the Faculty of Philosophy and Science in Opava. However, our advice is to choose from subjects that are part of your field first and from other studies second.

You can also find The Course Catalogue designed especially for Erasmus+ students at: <https://www.slu.cz/fpf/en/coursecatalog>



Important Documents

Learning Agreement (LA) is a document containing the subjects that you are going to study during your stay. The Learning Agreement is filled with your personal data and data concerning your home university. You have to choose your subjects first and then add them to your Learning Agreement (LA). You are supposed to print the LA, sign it and send it to your coordinator (or other responsible person based on the rules at your university). The Coordinator at your faculty will send your LA to the coordinator of Faculty of Philosophy and Science (FPS SU) before the deadline. **The Learning Agreement must be signed by all three parties before the mobility begins.**

Academic Year Schedule

The Winter semester usually begins in the fourth week of September; the Summer semester usually begins in the last week of February. You should arrive some time before the semester starts, usually 3-5 days in advance. You need to inform the faculty coordinator of FPS SU about the exact date of your arrival. The day of departure is registered in your participant agreement, which you sign at your home university before the mobility starts. The dates of your stay will affect the amount of money in your grant. You need to inform the faculty coordinator of FPS SU about your exact day of departure one month before you leave.

University Accommodation

Accommodation is arranged for the Erasmus+ students in a room at one of our dormitories depending on availability. You need to inform the faculty coordinator of FPS SU if you would like to be accommodated.

Before Mobility

The price depends on the length of your stay (2.400-4.200 CZK per month). The rooms are equipped with beds, desks and wardrobes. There is a bedding set (duvet + pillow) and bed linen available for each student, there is no need to bring your own. A washing machine is also part of the dormitory equipment. Kitchen facilities include a stove, kettle, microwave and fridge. The student needs to bring their own towels and personal hygiene items. You can find more information about the accommodation on this link: <https://www.slu.cz/fpf/en/accommodation>

Insurance

Every student coming for Erasmus+ at FPS SU in Opava is obliged to arrange travel insurance for the whole stay at their expense.

Visa Procedure

If the student is coming from other than the EU country, they are responsible for any Visa requirements. The Department of Foreign Relations of FPS SU in Opava will help the student to get the important confirmations. The most important information on Visa procedure and documents which are required can be found in here: [https://www.mzv.cz/jnp/en/information_for_aliens/types_of_visas](https://www.mzv.cz/jnp/en/information_for aliens/types_of_visas)

We recommend applying for a Visa at least three months before the date of your arrival to the Czech Republic to be sure to get a Visa in time.

Czech Language Course

The Czech language course is intended for foreign students (Erasmus+ etc.) or for foreign guests who would like to learn Czech as beginners or to improve their current Czech language skills during their stay at our faculty. The course is free of charge and is designed for foreign students or guests who are admitted to our faculty. You need to inform the faculty coordinator of FPS SU if you are interested to attend this course. After you inform the coordinator, you will get information where and when the course will be taking place.

Support Centre for Students with Special Needs

The Support Centre for Students with Special Needs (SC) is a university institute offering social-psychological, special-educational and career consulting services. The SC is also the contact point and consulting centre for students with special educational needs. It offers services such as assistance services, typing, lecture-reporting, etc. in addition to short/long term disability assistance. If you are in need of these services, you can contact the centre directly via email: pkcentrum@slu.cz

The Centre can be also contacted here:

Slezská univerzita v Opavě

Poradenské centrum

Olbrichova 625/25 (wheelchair access from the courtyard)

746 01 Opava

Tel.: +420 553 684 815

During Mobility

If you are accommodated in one of our dormitories, you have to sign an accommodation deal at the Department of Halls of Residence and Canteens and pay the refundable deposit. We recommend that you pay the accommodation fee for your stay in advance. Otherwise payment must be made by the 15th of each month.

If you are a student coming from outside the EU (Key Action 107 - International Credit Mobility), you need to sign a participant agreement and withdraw your Erasmus scholarship. Your Buddy or your faculty coordinator will help you with the process.

You will attend the lectures and seminars according to the subjects you have applied for in your Learning Agreement. The exact timetable will be established during the first teaching week. In case you need to make changes to your study plans, please be aware that it is allowed only during the first five weeks of your stay. In that case you should ask the faculty coordinator at FPS SU to help you to fill in the document called "Changes to Learning Agreement". The document Changes to the Learning Agreement will be sent to your home university to be signed.

During the first weeks of your stay your Buddy will help you to get a student card or card for public transport if needed. Your Buddy is there to help and support you during your stay.

Login and Wi-Fi

The Silesian University uses a Central Registry of People called CRO. After you arrive, let your Buddy help you to register there and set up your Wi-Fi password for Eduroam. Eduroam is a Wi-Fi network used by all of the universities in the EU and it is provided in all of the university buildings.

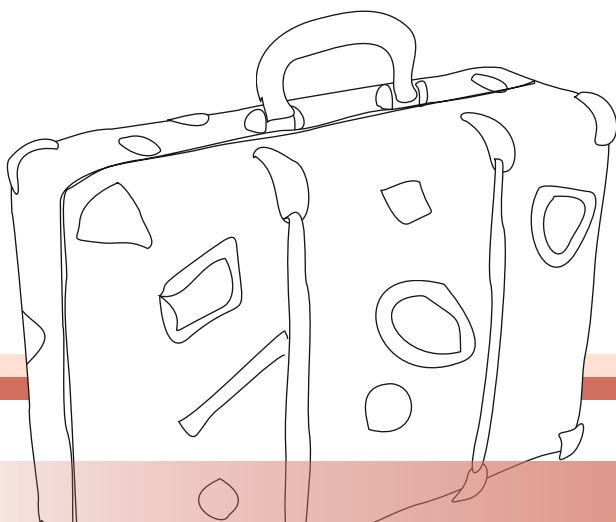
Please do not use Eduroam (university Wi-Fi) to download torrent files! If you do, there will be serious consequences, as the university Wi-Fi is monitored for misbehaviour.



After Mobility

As a student you are obliged to inform the coordinator about the exact date of your departure at least one month in advance. Based on this information you are entitled to obtain the special accommodation grant arranged by the faculty coordinator at FPS SU. You are also obliged to inform the Department of Halls of Residence and Canteens about the date of your departure; in this case, at least two weeks in advance so that your deposit could be returned.

At the end of the semester you are expected to pass the exams. The exact dates for the exam periods are different for each academic year but they usually cover January and most of February as well as the period from mid-May to the end of June. Before and during the exam period, you are obliged to register the terms of exams in the IS system. After receiving all the exam results, you will be provided with the Transcript of Records and Confirmation by the faculty coordinator. The most important information in your Confirmation is the date of your stay. The actual period of your stay must fit with the dates. You will hand the documents to your faculty coordinator at your home university. The dates on the Confirmation will affect the amount of money in your grant.



Important Information about the Stay

Buddy Programme

The FPS SU in Opava has a Buddy Programme for international students. Information about your actual Buddy will be sent to you in the informational email.

Your Buddy will pick you up on your arrival, take you to your dormitory and show you Opava. Your Buddy will also help you with integration into the student community and student life at our faculty. He or she will become your first new Czech friend.

Erasmus Club

You can also find some helpful information on Facebook in a group called Erasmus Club Opava. For example there is a list of organized activities for Erasmus students.



Important Information about the Stay

University Map



Legend:

Bezručovo nám. 13
(abbreviation B):
Institute of Computer Science,
Institute of Physics,
Institute of Creative Photography

Bezručovo nám. 14
(abbreviation C):
University Library

Hauerova 4
(abbreviation D):
Institute of Film, Television
and Radio Production

Hradecká
(abbreviation H):
dormitories, Institute of Gastronomy,
Spa Management and Tourism,
Department of Halls of
Residence and Canteens

Masarykova třída 37
(abbreviation M):
Office of the Erasmus+ Faculty Coordinator,
Institute of Historical Sciences, Institute of Foreign Languages,
Institute of Czech Language and Library Science

Student Card

Every student of the university has a right to get a university Student Card. The card can be used for identification (for example in the University Library) or to get a discount (for example in museums, galleries etc.). With this card, students are entitled to get food tickets at the Department of Halls of Residence and Canteens. The university Student Card can be acquired in an office called the Card Centre located in building Bezručovo nám. 14 (see University Map above), room number 425.



Important Information about the Stay

Scanning and Printing

At every university building there is a multifunctional device for scanning and printing which is connected to your Student Card account. You can pay money into your account at the Card Centre at any time to cover the cost of potential purchases. Once you send anything to print via SafeQFollowMe (which is the same on every PC within the university network), you can come to any of these multifunctional devices, put your Student Card to the reader and your print task will be downloaded from SafeWFollowMe print queue and printed. The price will be deducted from your Student Card account.

If you need to scan something, you can go to any multifunctional device; put your copy in the machine and your Student Card to the reader. Then choose the option to send the digital copy to your email address (which is symbolized by the icon Me), or you can download it to your USB flesh drive or write an email address manually. This function is free of charge.

Copying works very similarly. You need to insert the original to be copied into the multifunctional device, put your Student Card to the reader and choose the copy function. The price will be deducted from your Student Card account.

For more information on technical services of the university, please contact our Centre of Information Technologies:

<https://www.slu.cz/slu/cz/citlide>

University Library

The University Library is located at Bezručovo náměstí 14. The entrance can be accessed from the main entrance to the building, where the students can pass by the reception into the corridor leading to the library entrance. Another way in is from the right side of the building where there is a passage leading into the courtyard and into the lower floor of the library building.

The library is located on three floors. On the lowest floor there is: a bibliobox (where students can return books even when the library is closed) and a sitting area. On the middle floor there is the entrance to the library, an area with open shelves and a study room, a self-check, a multimedia corner, 20 computers and a multi-functional device for scanning and printing (connected to SafeQFollowMe). On the third floor (which is accessible only from the inside of the library) there is a German and Austrian Library.



Important Information about the Stay

Transportation

Airports closest to Opava:

Ostrava

Ostrava's airport is called Leoš Janáček Airport. It is a small airport. The Airport is conveniently accessible via train. From Ostrava Airport it is possible to get to Opava via train with one transfer in Ostrava Svinov. More information on the airport can be found at this website: <http://www.airport-ostrava.cz/en/>

Brno

The Airport in Brno is called Brno Tuřany. It is also a small airport. From Brno Tuřany you need to use public bus transport to the city centre to the stop "Main Station". The Most convenient transport to Opava is via train with 2 transfers (in Přerov or Olomouc and in Ostrava Svinov). More information on the airport can be found at the website: <https://www.brno-airport.en/>

Katowice

The Airport in Katowice is a quite small airport. It is easily accessible via bus service from Ostrava. To reach the airport from Opava you need to use bus or train to get to Ostrava Svinov and from there you can use the private company Leo Express to get to Katowice Airport. For more information on the airport, please use the website: <https://www.katowice-airport.com/en/>

Vienna

Vienna Airport is one of the bigger airports easily accessible from Opava. It is used mainly for flights within Europe but you can use it even for long distance flights. It is easily accessible via train which would take you to the main station "Vienna Hauptbahnhof" and from there with one transfer in Ostrava Svinov to Opava.

For more information on the airport, please use the website: <https://www.viennaairport.com/en/passengers>

Prague

Václav Havel Airport Prague is one of the bigger airports easily accessible from Opava. It is easily accessible via train or bus with the main transfer point at Prague main train station. From that station you can get to Opava either with a direct train or using other trains with one or more transfers (likely in Olomouc or Ostrava Svinov or both). More information on the airport can be found at the webpage: <https://www.prg.aero/en>



Krakow

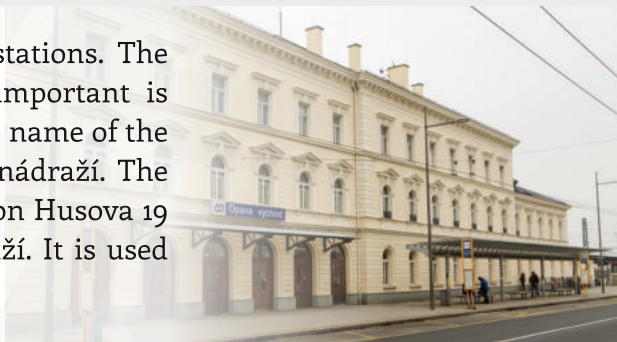
Kraków John Paul II International Airport is one of middle sized airports near Opava. It is accessible by train or bus from Krakow. From Krakow you can get to Opava by bus or train with one transfer in Ostrava Svinov (or more depending on connection).

For more information about the airport, please use this website: <https://www.krakowairport.pl/en>

Important Information about the Stay

Rail station

Opava has two major rail stations. The bigger and the one more important is situated on Janská 691/1. The name of the station is Opava Východní nádraží. The other rail station is located on Husova 19 and is called Západní nádraží. It is used for local trains.



Bus station

Opava does not have a central bus station. But there are several important places, from which buses often leave. One is in front of the Rail station Opava Východní nádraží. Another is on the Nákladní street, just under the Breda shopping centre. If you plan to go somewhere, always make sure you have checked which stop the bus leaves from.



City Public Transport

Opava has a dense network of stops for public transport. In the very centre there are trolley buses usually going every 20 minutes in each direction every day. The main stop for public transport is called Divadlo (Theatre). In the evening hours the frequency lowers to 30 minutes and around 23:00 the trolley buses and buses stop until 4 am.



For more information, check the Opava Public Transport Company webpage: www.mdpo.cz

Information on local transport links can be found on: <https://idos.idnes.cz/en>

Important Information about the Stay

Health Care

The Czech Republic has a good health care system. As a foreigner you need to take out the appropriate travel insurance and take your travel insurance card with you at all times.

If you have any urgent and life-threatening medical problem, call 155 immediately.

There will be an ambulance coming for you and it will take you to hospital. If you have any urgent non-life-threatening medical problem, you can use the emergency unit in the city hospital. The city hospital is situated on Olomoucká, no. 470. Trolley bus no. 201 goes from the city centre (Divadlo) to a stop Nemocnice, which means a hospital. Remember the entrance is from the right side. You could be charged an emergency fee of approximately 90 CZK for using this service (applied to all patients using emergency). This facility is only available after 5 pm; prior to 5 pm, it is reserved for scheduled procedures, so at this time you should visit your local doctor. Also because most of the personnel do not speak English, take your Czech room-mate / friend or Buddy with you.

If you have any other medical matter to be attended, consult with the faculty coordinator or your Buddy.



Emergency Numbers

- 112 - Universal Emergency Number
- 155 - Ambulance
- 158 - Police
- 150 - Fire Brigade

Important Information about Opava / Czechia

Safety

The City of Opava is a very safe city. You can walk during the day/evening or night anywhere, however, there are still some sensible basic safety rules you should observe. For example, please do not take large sums of money with you (except the cases you need to change money to Czech currency).

Also it is not advisable to take any valuables with you into the pubs or clubs and leave them unattended (such as your mobile phone, jewellery and so on). It is also recommended to avoid drunken people or people / areas that make you feel uncomfortable.

Food

As FPS SU in Opava does not have a cafeteria, most of the students cook their meals at the dormitory. That is why all the equipment in the kitchens at the dormitory belongs to students. If you want to borrow something, it is polite to ask.

In case of preference, there are some restaurants in the city where students can pay with food tickets and the food is cheaper. The food tickets are available to all students with a Student Card. The food tickets can be bought at the Department of Halls of Residence and Canteens. The value of one food ticket is always higher than the price the student pays for it. The difference is sponsored by the university.

The Czechs like mild tasting food and they eat a lot of meat. For vegans and vegetarians we recommend two restaurants: Květ lotosu and Bobaja. If you prefer stronger taste/spicy food, you can choose a vegan menu in Taste of India.

Important Information about Opava / Czechia

Money Exchange

There are two main money exchange facilities near the city centre. One is situated on Ostrožná street no. 209/6, the other is on the base level of the Breda shopping centre.

Other Useful Information

Every time you leave your room at the dormitory, you have to switch the light off, close the window and lock the door; check that you have the keys with you so you can get back to the building. If you forget or lose your keys somewhere, please contact the receptionist, who is there 24/7.

If you need anything or if you have a complaint of technical character, you can tell the receptionist who will pass the message to the relevant authorities. Most of the receptionists do not speak English so take your Czech room-mate/friend or Buddy with you or have the Google Translate ready.

Most of the facilities are used by all of the students. Please be patient, cooperative and tolerant to others. There are specific rules contained in the Regulations of the Dormitory and if you do not follow them, you can be held to account or even evicted. If you feel that the room-mates or someone at the dormitory does not behave properly, please leave the complaint with the faculty coordinator of FPSU.

Please keep your room, kitchen and bathroom tidy. Garbage belongs into the bins in the kitchen or rooms. If you want to throw out anything bigger, there are dustbins just outside the building. The yellow dustbin is for plastic, the green one for glass, the blue one for paper and the grey one for general waste.

There is a cleaning lady who dusts and disinfects the place, but if your things obstruct something that needs to be cleaned, she will leave it out.

When using bathrooms and toilets, please the place as you would like to find them.

The Building of Hradecká Dormitory has a peculiar way to open and close the windows. Before you try to open or close them yourself, please ask your Czech room-mate/friend or Buddy to show you. If you are still unsure, ask others to do it for you.

At the dormitory Hradecká at the end of the hallway on the second floor, there is a flat roof ending just outside the window. Although there is no official sign written, you are not allowed to go there. It is dangerous and you will be reported.

In Czech Republic it is safe to drink water from the tap.

We are part of the EU now but it has not been this way all the time. Some time ago we were a closed country. The older generation did not have the opportunity to learn English. So this is a reason why the older generation mainly do not speak English and you would need to use Google Translate or your Czech friends, for example in shops. The younger generation is better of course, so you can ask them for directions and you can practice the Czech you have learned in the Czech course provided by the faculty.

Important Information about Opava / Czechia

Culture and Sport

The cultural life in Opava swarms around the Silesian Theatre (which is also an opera house), the Silesian Museum, the House of Art, the Marionette Theatre and numerous private galleries.

There are events specific for every season that take place in Opava or in its near vicinity. These events, for example the Bezruč Opava Festival are open to all. Many events are in Czech, so it would be a good idea to take your Czech friend/room-mate or Buddy with you.

Still, some of the events are in various languages, for example 95% of all operas are in Italian, there is a German mass every week or you can join the event called Lange Nacht Der Kurzen Texte organized by the German Studies of FPS SU. Tours in museums and castles always have an English translation.

All of the information about ongoing events, Opava's cultural and sport facilities and others can be obtained from the Opava Information Centre which is located at the rear side of the Opava Town Hall called Hláska. Do not worry, they speak English.



BUILDING AND LOCATION OF THE INFORMATION CENTRE OF OPAVA

The Silesian University organizes some events annually, for example:

Majáles (Rag-day), which is filled with music performances, thematic and food stalls, student theatre performance, and many other activities in which the students are interested. It usually lasts for several days. Another activity is the festival "Na cestě" (On the Road), "Den prevence" (Day of Illness Prevention) and many others. For more information, please contact your Buddy or faculty coordinator of FPSSU.

Also Opava's past and present is rich in sports. Opava is represented by the SFC Opava football team, by HC Slezan team in ice-hockey and by BK Opava team in basketball. Tickets to all of the sport events can be bought at the site. The Schedule of the sport matches can be found on Opava website: www.opava-city.cz. There you can find also a number of other sport events.



Important Information about Opava / Czechia

Cultural Facilities In Opava

Silesian Theatre

Horní náměstí 13

Phone: +420 553 621 156

Web: <https://www.divadlo-opava.cz/>



The Theatre in Opava has three lines of entertainment; first it is drama, which is usually played in Czech, it covers plays by Czech authors, or plays translated into Czech. The second line is represented by music and it covers operas or operettas which are sung in Italian (mostly), in Czech (mainly operettas) or in other languages (for example, German). The Last entertainment line is ballet. For each performance there is prepared a leaflet which covers the content of the play in Czech and English. The programme of the theatre can be seen here: <http://www.divadlo-opava.cz/program/>

If you decide to visit the theatre, please be aware there is a certain dress code required.

Silesian Museum

Exhibition House

Sady U Muzea 1

Phone: +420 553 714 809

Web: <https://www.szm.cz/en/>



The Silesian Museum in Opava is the oldest museum and also the third biggest museum in the Czech Republic. The museum has several buildings and exhibitions, which are listed below. In the main building there is a permanent natural exhibition, permanent exhibition of prehistory, history and art history and seasonal exhibitions, which change periodically. The museum is open every day except for Monday. There is a small entrance fee. For more information, please see the webpage.

Silesian Museum Memorial of Petr Bezruč

Ostrožná 35

Phone: +420 553 625 024



Petr Bezruč was a famous poet who dedicated his work to the Moravian-Silesian region. The Memorial stands on his birthplace and the whole exhibition is dedicated to his life and work. The exhibition is prepared in Czech and English. The Memorial is open every day except Mondays. There is a small entrance fee.

There is also a festival dedicated to Petr Bezruč called Bezručova Opava which takes place in September. The event is a multi-genre festival which takes one week but the whole month is usually filled with activities connected to it. It is also one of the oldest festivals in the Czech Republic. There is also one more exhibition dedicated to Petr Bezruč, which is located in his chalet in Ostravice. It attempts to convey the atmosphere of the poet's lifetime. The exhibition is prepared in Czech but there is a downloadable guide prepared in English on the museum website. If you want to visit it, there is a small entrance fee.

Silesian Museum Hlučín-Darkovičky Czechoslovak Fortification Complex

Darkovičky, 748 01 Hlučín

Phone: +420 595 051 110

Mobile: +420 734 578 014



This fortification represents specific exhibitions dedicated to the time before, during and after the Second World War in Czechoslovakia. It is open only a few months a year. The Opening hours can be found on the website of the Silesian Museum. There is a small entrance fee. To get to Darkovičky, you need to use a train or bus to Hlučín and then a bus to Darkovičky (no. 56, 290 or 292). The fortification complex is just out of the village.

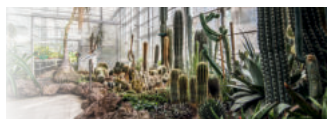
Important Information about Opava / Czechia

Silesian Museum The Second World War Memorial Hrabyně



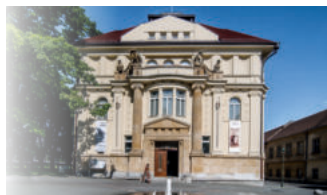
This exhibition is dedicated to the Second World War and is located in the Hrabyně village, where the fiercest battles of this war in the Czech Republic took place. In the past, it also used to be called the Memorial of Ostrava's Offensive. It is a memorial of the war period, persecutions, Nazi regime and resistance. It is also a memorial of the fallen soldiers who have lost their lives here. There is a small entrance fee.

Silesian Museum Nový Dvůr Arboretum



The Arboretum serves as a botanic garden with special focus on dendrology. You can visit it in all seasons. There is a small entrance fee. The opening hours can be found on the webpage of the Silesian Museum. You can get to Nový Dvůr by public transport via bus no. 248 or 247 leaving from the stop "Opava Bílovecká TQM".

OKO - Municipal House Ostrožná 46 Phone: +420 553 791 947 web: <https://oko-opava.cz/>



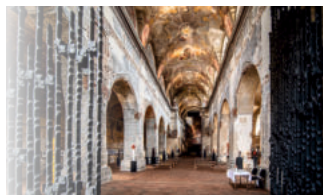
OKO is an abbreviation in Czech for the Opava Culture Organization. It organizes many culture activities in town. The Municipal House is used mainly for exhibitions. There is one permanent exhibition called the Journey of the City ("Cesta města") and several other which change regularly. The Journey of the City covers the history of Opava. For the changing exhibitions, please check the webpage. Exhibitions are open daily except Monday. There is a small entrance fee.

OKO - House of Art Opava

Pekařská 12

Phone: +420 553 821 561

web: <https://dumumeniopava.cz/>



The House of Art Opava serves as a gallery for all kinds of art exhibitions. Exhibitions change periodically, for the current programme, you need to check the webpage. The exhibitions are open daily except Mondays. There is a small entrance fee.

Cinema Mír

Kolářská 5

Phone: +420 553 630 342

web: <https://www.kino.opava.org/>



Cinema Mír is not only a cinema but also a culture space serving all kinds of events. For the current programme, please check the webpage.

Cinestar Opava

OC Breda & Weinstein

U Fortny 49/10

Phone: +420 558 888 999

Web: <https://www.cinestar.cz/en/opava>



Cinestar Opava is a cinema located in the third floor of the Breda shopping centre. For the current programme, please check the webpage.

Important Information about Opava / Czechia

Opava Sights

You can get information on these sights in Opava's Tourist Information Centre and also on many more sights.



- 1 Our Lady of the Assumption Co-Cathedral ("Konkatedrála Nanebevzetí Panny Marie")
- 2 Model of the Solar System ("Model sluneční soustavy")
- 3 Church of St. Adalbert ("Kostel sv. Vojtěcha")
- 4 Silver Lake ("Stříbrné jezero")
- 5 Church of the Holy Spirit ("Kostel sv. Ducha")
- 6 Clock Tower Hláska ("Hláska")
- 7 Church of St. Hedwig ("Kostel sv. Hedviky")
- 8 Chapel of the Saint Cross ("Kaple sv. Kříže")

Sport Facilities In Opava

Fit Klub Perfekt

Sady Svobody 4, Phone: +420 721 080 155

Fitness centrum Pepa

Zámecký okruh 8, Phone: +420 553 625 512

Tennis Courts

Nerudova 25, Phone: +420 553 613 847

Wolkerova 1, Phone: +420 553 714 166

Městské sady, Phone: +420 553 719 932

Bílovecká 180, Phone: +420 553 627 688

Karlovecká 1B, Phone: + 420 724 777 843

Important information about Opava / Czechia

AB Squash Centrum

Fügnerova 52, Phone: +420 553 613 332

TJ Slezan – Table Tennis

Boženy Němcové 20, Phone: +420 553 613 412

(possibility of renting if interested)

Public bath (swimming pool, bath, pedicure, massage, sauna)

Zámecký okruh 4, Phone: +420 553 627 688

Medical and Rehabilitation Centre (swimming pool, fitness, sauna, solarium, spa, aqua aerobics, massage)

Englišova 526, Phone: +420 553 760 531

Health Park (fitness, spa)

Veleslavínova 299/6, Phone: +420 553 770 970

Other Regional Attractions

There are even more attractions in the vicinity. You can ask your Buddy about them or search the Internet. Please note that to many of these locations you would need to travel via some public transport or by foot.



Natural Attractions



1

1 Moravice Nature Trail ("Přírodní park Moravice")

Web: <https://www.obecmoravice.cz/pesi-turistika>



2

2 White Opava Nature Trail ("Bílá Opava")

Web: <https://www.ejeseniky.com/turistika/naucne-stezky/bila-opava>

Other Natural Trails of Jeseníky:

<https://www.ejeseniky.com/turistika/naucne-stezky>

Technical Attractions



1

1 Kružberk Dam ("Kružberská přehrada")

Web: <https://www.kuzberk.cz/turisticke-cile-a-zajimavosti/kruzberska-prehrada>



2

2 Open-air Museum of Folk Art and Handcraft in Bolatice ("Skanzen lidových tradic a řemesel v Bolaticích")

Web: <https://www.bolatice.cz/obec-bolatice/informace-obci/skanzen-lidovych-tradic-a-remesel/>

Important Information about Opava / Czechia

Castles



1 Kravaře Chateau ("Zámek Kravaře")

Web: <https://www.kravare.cz/en/>

2 Raduň Chateau ("Zámek Raduň")

Web: <https://www.zamek-radun.cz/en/>

3 Chateau in Hradec nad Moravicí ("Zámek v Hradci nad Moravicí")

Web: <https://www.zamek-hradec.cz/en/>

4 Ruins of Vikštejn ("Zřícenina Vikštejn")

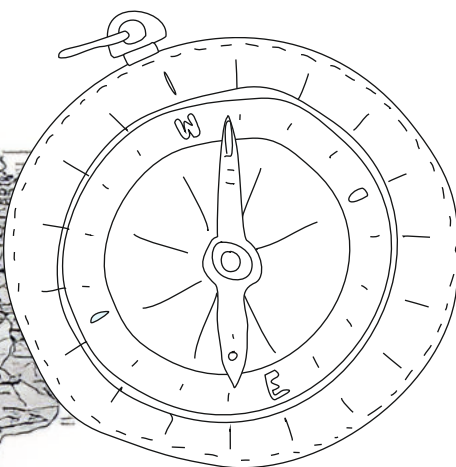
Web: <https://www.ichradec.cz/objevuj-hradec/tipy-na-vylet/vikstejn/>

5 Studénka Castle and Vagon Museum ("Zámek Studénka a Vagonářské muzeum")

Web: <https://www.vagonkarske-muzeum.cz>

For more castles, fortresses and chateaux, please visit:

<https://www.informuji.cz/en/castles/>





SILESIA UNIVERSITY

FACULTY OF PHILOSOPHY
AND SCIENCE IN OPAVA

SLEZSKÁ UNIVERZITA